

ⁿ4ce Survey

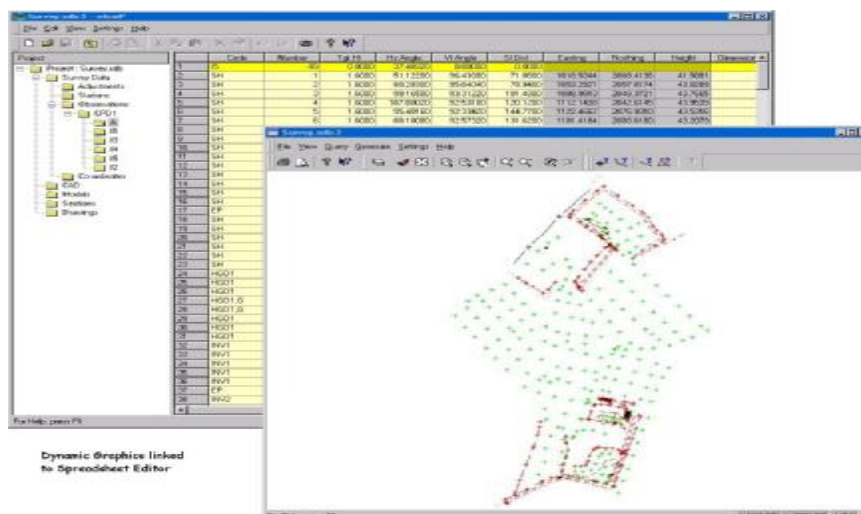
ⁿ4ce is an intuitive Windows based approach to integrated software for the Environment and Construction Industries. ⁿ4ce Survey gives you the following range of key functionality for survey mapping.

Download and upload to externally connected data capture devices used with total station and GPS survey equipment i.e. hand held units or PCMCIA cards.

Dynamic Code Table, default survey codes, line styles, layering, text and point attributes can be established. The Survey Code table provides a structure for drawing projects and data exchange.

The **Traverse Wizard** provides an interactive an intuitive interface, completing the process of control traverses. The object-oriented approach to the design of the software calculates, adjusted station values for all survey readings.

Survey Data Reduction. The reduction option converts raw survey data into x,y,z coordinated data, correcting for UTM, Mean Sea Level, Curvature and Refraction, if necessary.



The Project Database. Survey data can be processed and entered from a number of sources; therefore, all data within a single project can be viewed and accessed seamlessly. A Windows Explorer type interface enables the user to view observations and coordinates in either a spreadsheet format or graphical display.

All data, relating to a single project, is stored in an object-oriented database, which allows for greater efficiency in data manipulation. For example, if you change the target height for a number of observations, the coordinates for those points are automatically updated.

Graphical Display. Processed data can be displayed in any number of graphical display windows that automatically reflect changes to the data as they occur. A useful feature of this is the ability to show data related to individual station set-ups.

Data Export and Output. Printed output from either the spreadsheet or graphic display is achieved through standard Windows™ print drivers. Output to a number of file formats is also supported, i.e. MOSS GENIO and AutoCAD DXF.



ⁿ4ce Survey is available from AIT Spatial Ltd and was developed by Applications in CADD (AIC). From system selection to training, implementation through data-load to application development, AIT Spatial can help you make the most of your Autodesk solution.