

## The Complete Solution to your Planting Needs

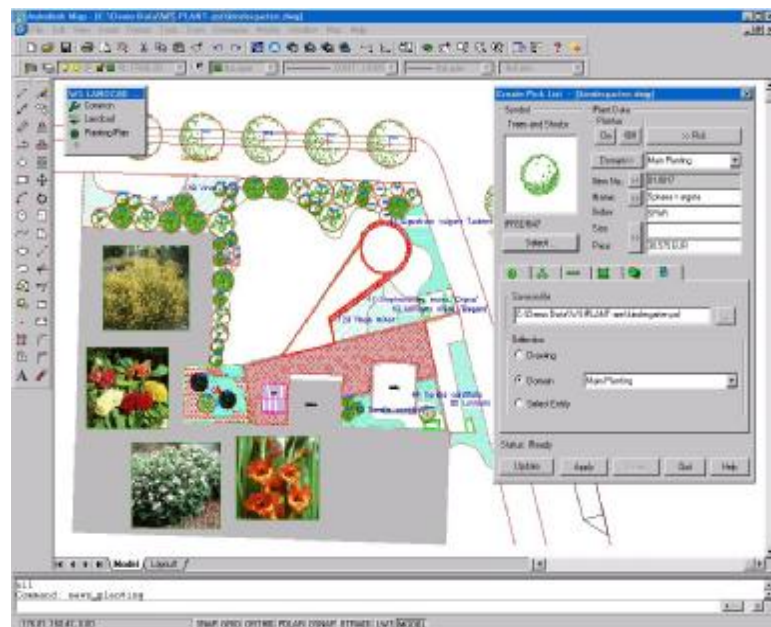
*PlantARE*, now available from AIT Spatial Ltd, provides the Landscape Architect with a professional module for the creation and editing of all types of 'hard' and 'soft' landscape design.

*PlantARE* offers a sophisticated means of defining planting layouts in either single, distributive, series or area patterns to suit the nature of the project. Integrated with **PLANTUS**, Europe's most successful commercially used plant database, *PlantARE* enables the search and selection of the most suitable variety of plants from a library of over 8,000 plants and associated photographs.

Individual plants or groups can be displayed on the drawing using a variety of existing symbols or, using the built-in tools of *PlantARE*, user-defined symbols or hatch patterns can be created to represent the variety of planting types used.

*PlantARE* and **PLANTUS** together provide the designer with the perfect link between the Design Specification, Bill of Quantities and other reports, as the system continually updates the drawing's database with the number of plants created against their cost, size and associated data. The system provides a full scheduling and index of plants used in the design displaying these details in user-definable frames alongside the detailed layout.

*PlantARE* operates as a fully integrated module within standard AutoCAD and AutoCAD Map. Used in conjunction with AutoCAD, *PlantARE* provides a flexible and comprehensive means of defining, manipulating, reporting and costing landscape designs.



*WS LANDCAD PlantARE* is available from AIT Spatial and was developed by Widemann Systeme of Germany. Widemann Systeme places a special focus on landscape architecture and related disciplines and have been offering solutions since 1985.

From system selection to training, implementation through data-load to application development, AIT Spatial Ltd can help you make the most of your Autodesk solution.