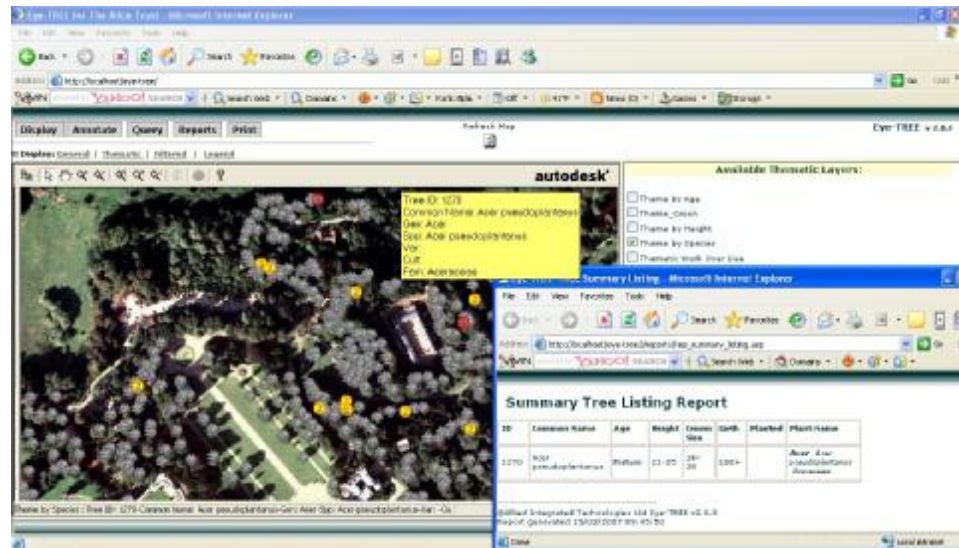


Simplify the task of managing your tree stock.

Eye-TREE provides a full record of tree inspection and condition for the entire tree stock of the estate. Using a simple wizard based approach; users can add new trees, update the details of existing trees and assign work tasks to each tree.



Simplified Data Input

- Ø Load tree survey details straight from handheld applications such as Digiterra
- Ø Utilise existing site surveys
- Ø Click on map to record tree location
- Ø User defined pick lists for remaining information such as height, diameter at breast height, crown, age, as well as cultivar, health and any relevant work details.
- Ø Record Ceremonial Details

Interactive Interrogation

- Ø Display those trees where work is planned next week, in 3 weeks or 6 months etc
- Ø Display all trees with a particular task – e.g. Monitor progress of bacterial canker
- Ø Display all trees with nesting boxes
- Ø Calculate Planting densities for any plant in any area
- Ø Display trees within High Risk Zones

Information Portal

- Ø Attach any number of photographs, video clips, and other external documents
- Ø Provide tabular listings of work due
- Ø Produce work histories for one or more trees
- Ø Combine with data in popular GIS and database formats including AutoCAD DWG, MapInfo and ESRI SHP

Site plans can also be printed straight from Eye-TREE with standardised text such as Ordnance Survey copyright notice and address Site details included automatically.

Eye-TREE is expandable for your own needs. Almost any data element can be recorded and mapped within the system.

Eye-TREE is now available as a hosted solution allowing access to any tree information from any Internet connection. The hosted option virtually eliminates IT management enabling you to manage what you manage best – the tree stock.