

## Eye-PRINT

**Ensure Ordnance Survey copyright compliance on all hard copy plots. Ideal for survey maps and planning purposes, in fact virtually every map required even when printing on pre-printed stationery.**

By focusing the map display on the area of interest and clicking on the scale required, Eye-PRINT handles the remaining printing process.

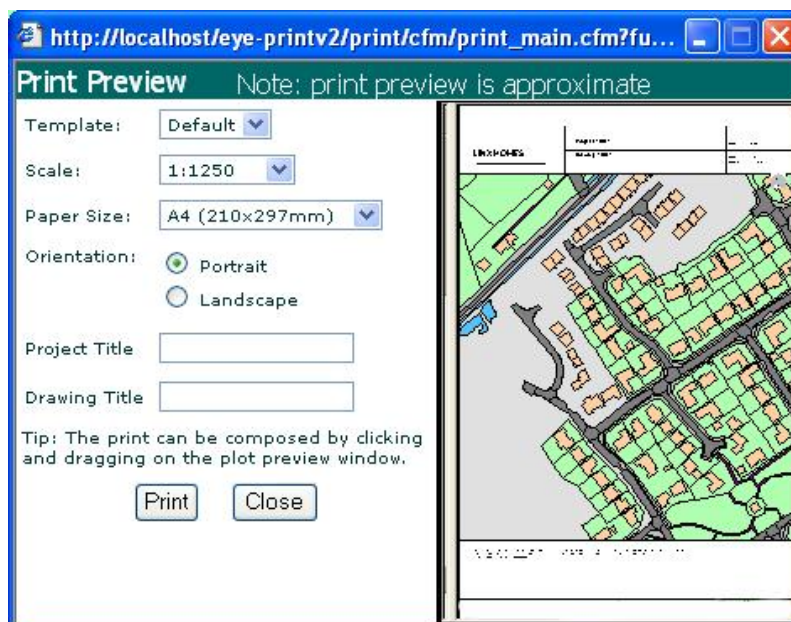
Eye-PRINT now incorporates a print preview facility. If necessary the map can also be repositioned within the print preview prior to executing the print.

On every map produced Eye-PRINT positions the following page elements

- North arrow
- Scale bar
- Ordnance Survey Copyright statement
- Ordnance Survey Licence Number
- Date and time of plot
- Map Name

The position of each page element can be modified as necessary under administrator control. All the page elements are optional on the hard copy output. Only authorised users, however, can 'switch off' the Ordnance Survey statements.

Eye-PRINT also provides a number of mark-up tools including red-lining and text annotation. Consequently, areas of interest can be demarcated and associated text, such as measurements or instructions, can be included.



*Eye-PRINT was developed by AIT Spatial Ltd and forms part of the 'Eye' range of applications exclusive to AIT Spatial.*

*From system selection to training, implementation through data-load to application development AIT Spatial can help you make the most of your GIS solution.*