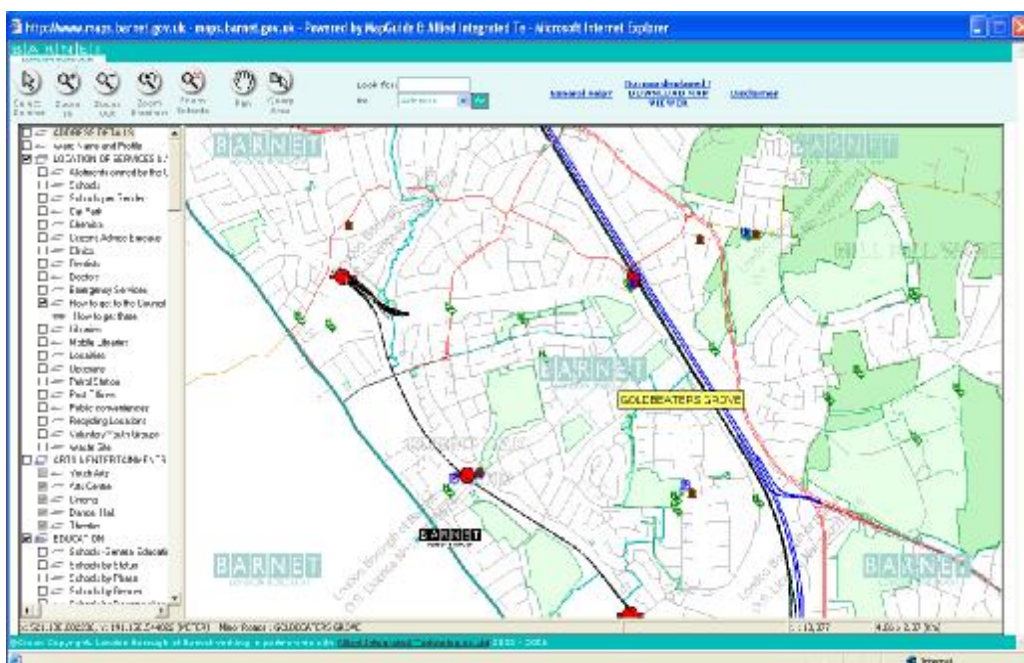


Eye-MARK

Eye-MARK for Autodesk MapGuide, enables Ordnance Survey Copyright compliance for the use of Ordnance Survey MasterMap, LandLine™ etc., data on the Internet.

To enable an organisation to use Ordnance Survey information on the Internet, the organisation's name must be clearly visible, or watermarked, on the map - irrespective of scale or zoom width. To this end Eye-MARK utilises the Autodesk MapGuide Application Program Interface to position the organisation's name in the upper left, lower left, upper right and lower right corners of the map window along with the Ordnance Survey Licence Number.



Whilst the Ordnance Survey has stipulated certain criteria AIT Spatial has provided maximum flexibility for the publishing organisation. The size, font and angle of the text are all readily configurable. Furthermore, the text can be enhanced with an appropriate graphic – such as the organisation's logo.

Meeting OS copyright requirements without any degradation in the performance of Autodesk MapGuide have enabled a number of customers to progress their e-government strategies beyond their expectations.

Eye-MARK was developed by AIT Spatial Ltd in conjunction with Winchester City Council and is exclusively available from AIT Spatial.

From system selection to training, implementation through data-load to application development AIT Spatial can help you make the most of your GIS solution.