

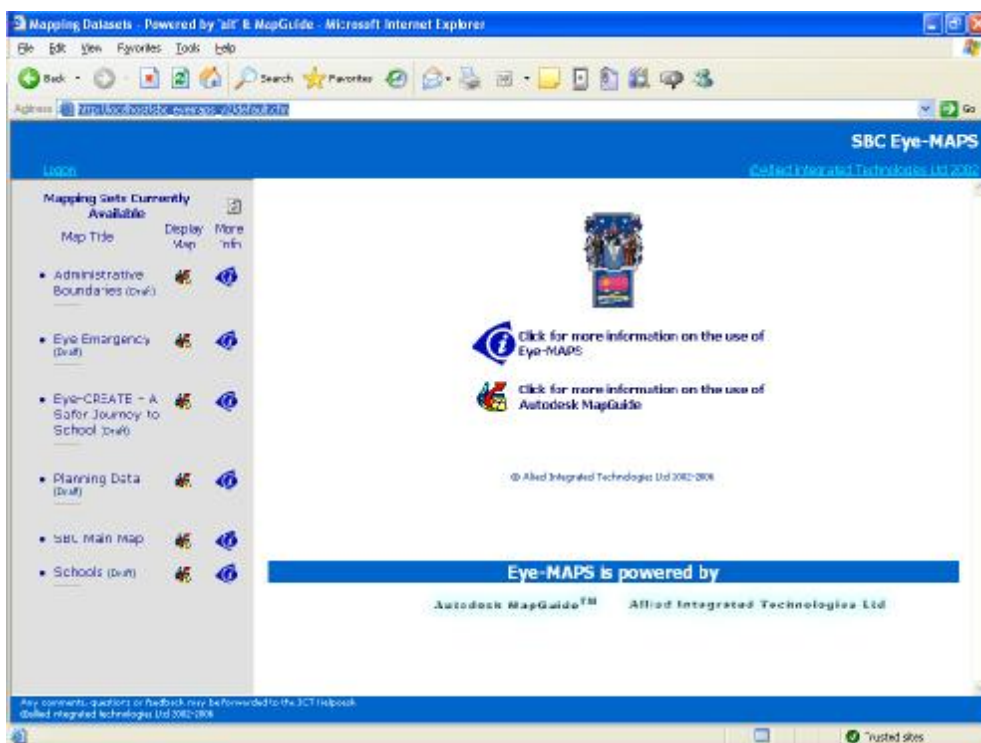
Eye-MAPS

Eye-MAPS from AIT Spatial Ltd enables your users to simply pick the Autodesk MapGuide mwf file they wish to view. Eye-MAPS is a database driven web-site that empowers users in their use of Autodesk MapGuide information. The Map title and status are automatically displayed.

By clicking on the information button, the user can view a textual description of each MWF file. Details also include data sets used, thematic maps available, zoom goto facilities, reports etc.

Alternatively, the user may simply click on the map button to display the MWF within a predefined Map template. The map template provides all the standard functionality including advanced navigation tools such as Address Search facility.

Autodesk MapGuide authors can login into Eye-MAPS and insert, update and even delete existing records.



Eye-MAPS was developed by AIT Spatial Ltd in conjunction with Southend Borough Council and is exclusively available from AIT Spatial.

From system selection to training, implementation through data-load to application development, AIT Spatial can help you make the most of your Autodesk solution.